

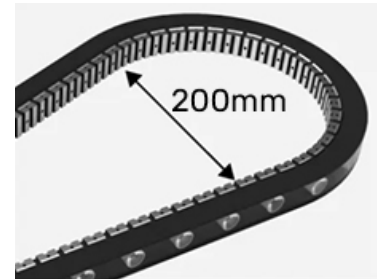
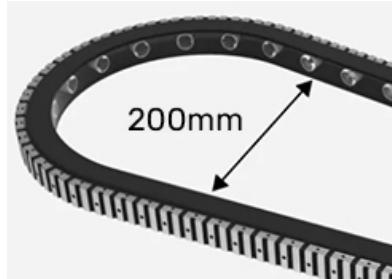
Thank you for purchasing the Allanson SPEEDLamp LED Replacement lamp. The retrofit process is straight forward and should be done following local electrical codes and standards.

Flex LED Wall Washer Specifications

Features:

- Can be bent vertically and horizontally;
- 10°/60°/20°/30°/45° Lens for multiple angles;
- High light effect 3535 LED can be white light/DMX RGBW version;
- Using constant current IC design, IP67 waterproof; IK07 Complete clip accessories, bracket, aluminum channel, channel;
- Flexible bracket, outdoor special equipment and rotatable;
- Bending and twisting more gentle, smaller volume, large volume, light weight;
- Soft bend flexibility, strong impact resistant, high tear resistance and high weather resistance;
- 50,000 hours of life with a 5-year warranty.

Model: WOX2727E27C



Application:

- Used in parks, squares Playground lighting
- Suitable for indoor and outdoor use, increase the sense of beauty and art
- Used for security lighting, such as: parking lots, residential areas, construction sites, etc
- Suitable for landscape, stage, event, retail, commercial space, As well as artistic and decorative lighting.
- Used in shopping malls, logo lighting, lighting projects, building group exterior wall lighting, bridge beauty, indoor background wall



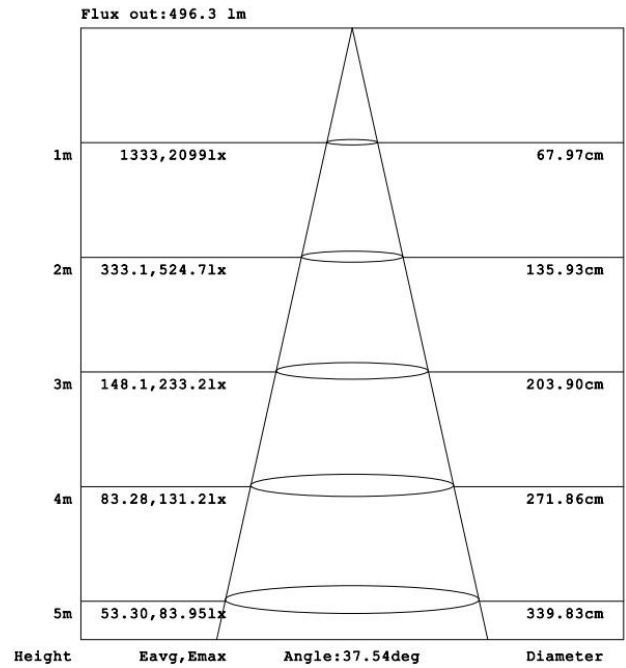
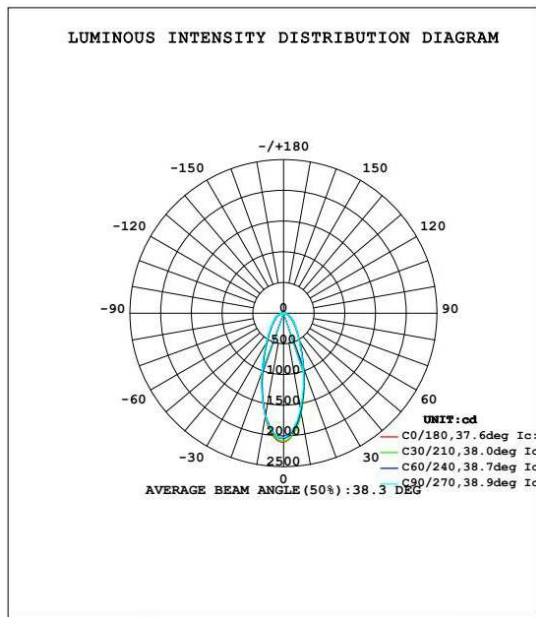
Thank you for purchasing the Allanson SPEEDLamp LED Replacement lamp. The retrofit process is straight forward and should be done following local electrical codes and standards.

Flex LED Wall Washer Specifications

Basic Parameters:

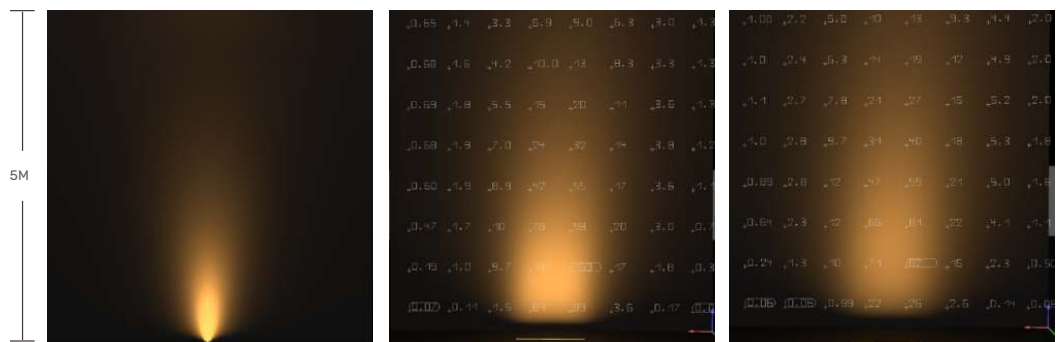
Input voltage	24V	Static Electricity	1000V (ESD)
POWER/M	27W	Temperature	25°C~+45°C
Luminous efficiency	80lm/W(6500K)	CCT	3000K/4000K/6500K
LED/M	24LEDs	Waterproof level	IP67
Beam angle	20X30°	Length	5M(Max)
CRI	>80	Dimming	PWM
Warranty period	5 years	Pixel Segment & Address QTY	4Pixel/M

Light Distribution Curve:



20°*30°

20°*30° beam angle lens
recommend distance from wall: 0.5M
Light concentration, High lighting distance



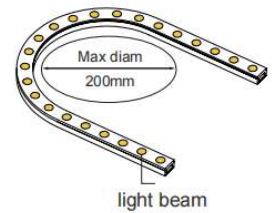
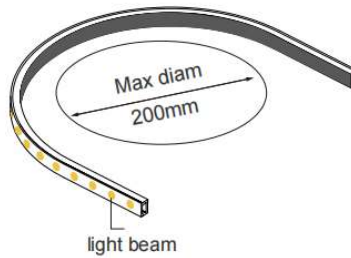
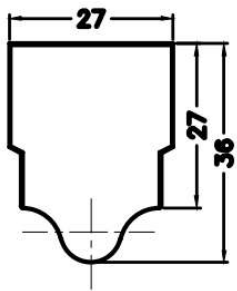
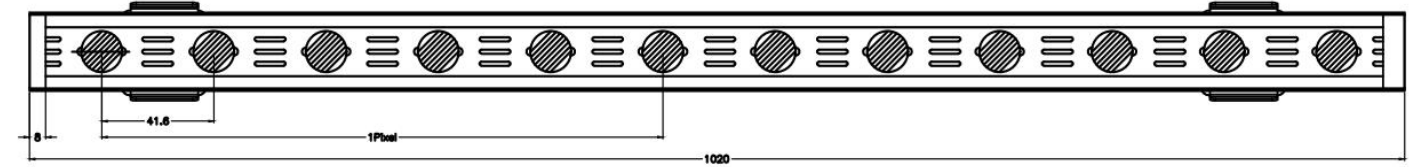
0.3M

0.5M

Thank you for purchasing the Allanson SPEEDLamp LED Replacement lamp. The retrofit process is straight forward and should be done following local electrical codes and standards.

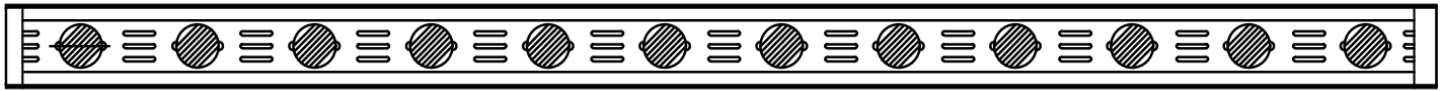
Flex LED Wall Washer Specifications

Product Dimension:



Installation:

Flex LED Wall Washer



1



Clip

- 2 .As shown in the figure, there are three installation methods:
- 2 .Installation recommendation: 1 meter LED wall washer needs to install more than 5 pieces of clip.

2



Clip



Aluminum profile



3



Clip



swinging strut

