

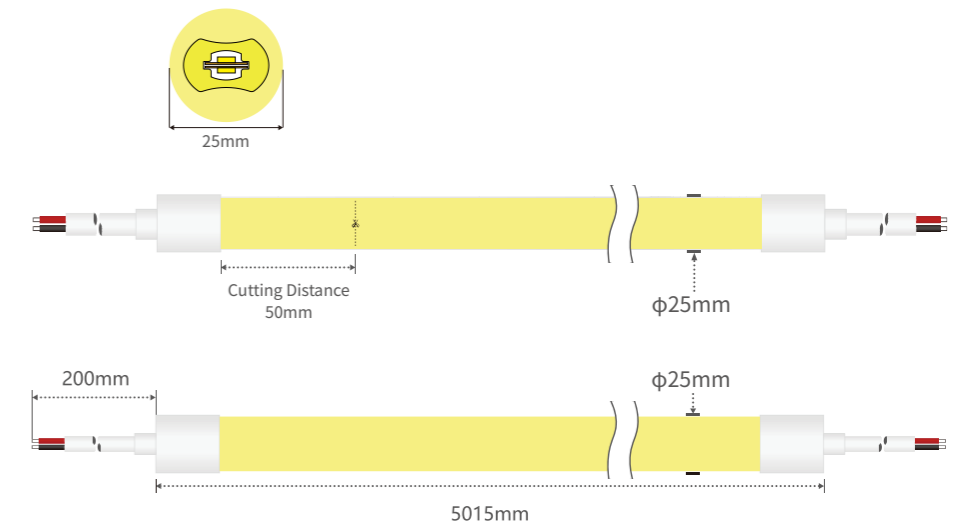
## D25-360° LED Strip



### Parameter Details

#### D25-360° LED Strip

PCB Width(mm)	8
LED Type	2835
LED strip Quantity(pcs)	2
LED Quantity(D/M)	240
Weight(g/m)	570
Rated Power(W/M)	18.4
Voltage (V)	DC24
Luminous Flux(LM)	1140~1230
EFF (LM/W)	57~62
Render Index(RA)	≥90
Working Temperature	-20~50°C
CCT(K)	2700K±100
	3000K±150
	4000K±200
	6500K±300

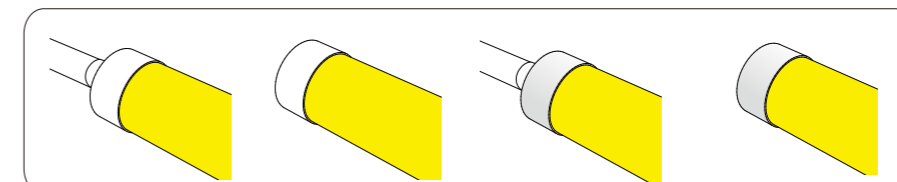


\* Optional waterproof connector (the image is for reference)

### Accessory Specifications

\* Can freely mix and match

Wrap around style end cap



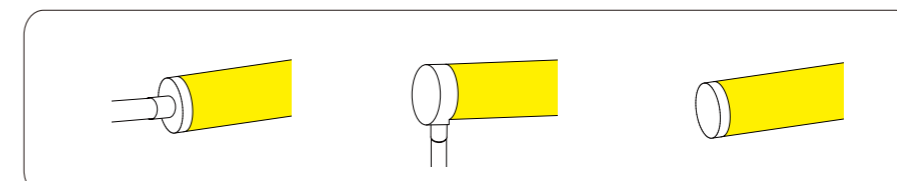
Straight Out (Silicone)

End Cap (Silicone)

Straight Out (Metal)

End Cap (Metal)

Edgeless end cap

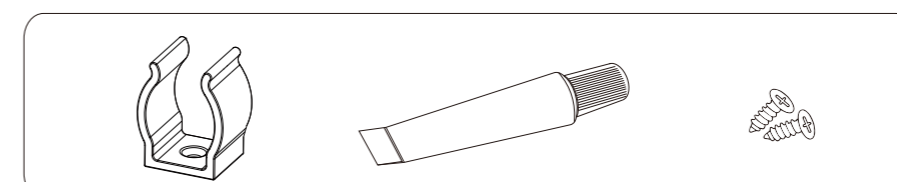


Straight Out

Bottom Out

End Cap

Accessory



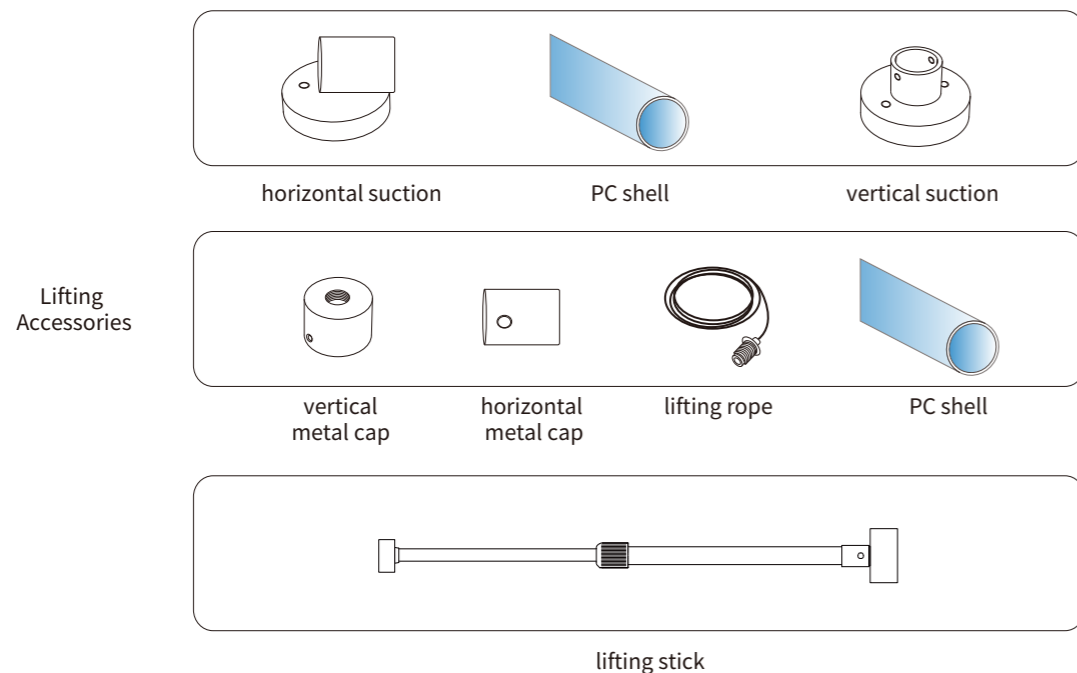
Clip

Glue

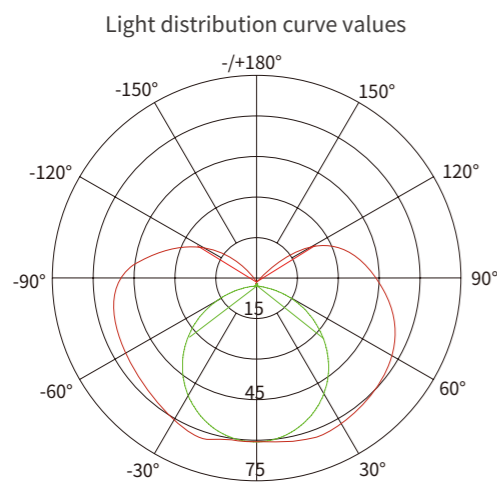
Screw

### Accessory Specifications

\* Can freely mix and match

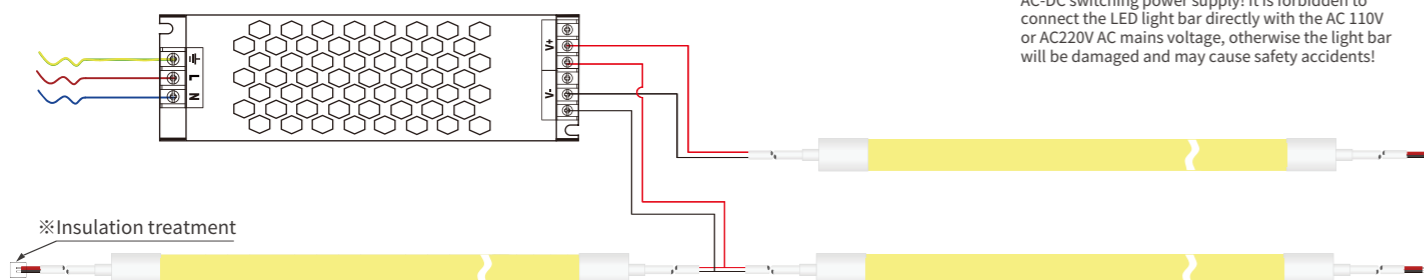


### Light Distribution Curve Values



### Connection Method

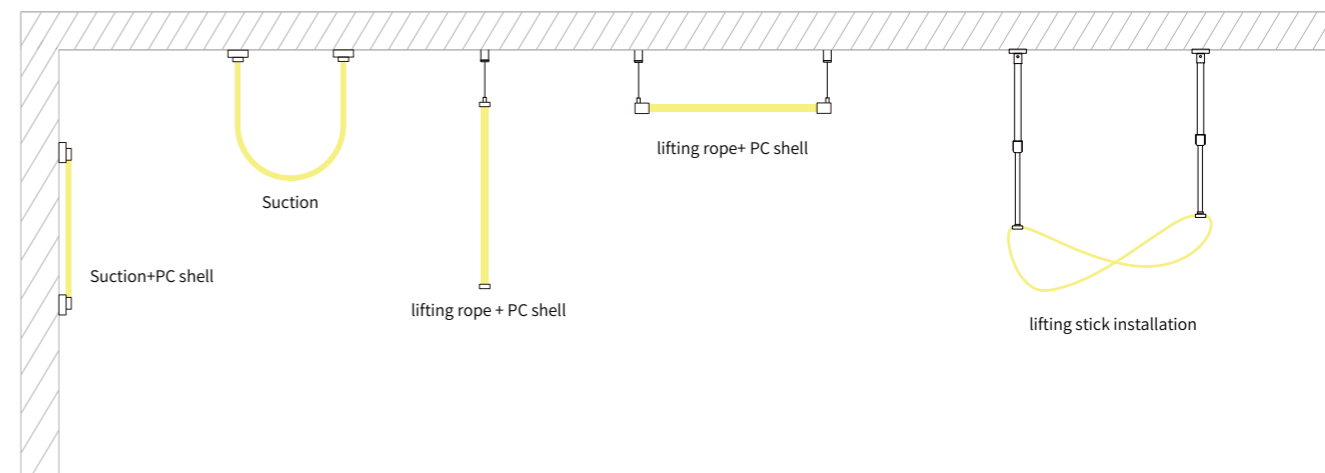
220-240Vac, 50/60Hz



⚠ This product uses low-voltage DC power supply, and must be used after voltage conversion with AC-DC switching power supply! It is forbidden to connect the LED light bar directly with the AC 110V or AC220V AC mains voltage, otherwise the light bar will be damaged and may cause safety accidents!

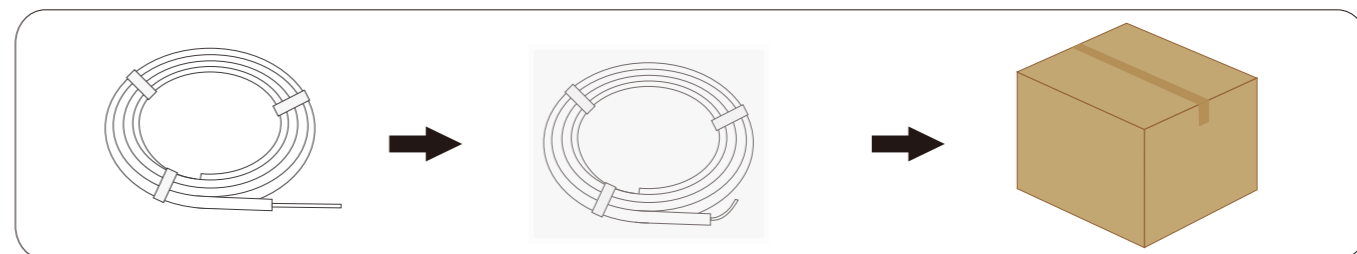
※Intermediate power supply, 5meters can be connected on each side, a total of 10 meters

### Installation Method



### Packaging Method

\* When there is a difference with the actual weight, the actual weight shall prevail



Packaging Length	Weight of 1 bag	Carton Size	Packing Quantity	Total Weight
5 m/bag	2935 g/bag	600*600*250 mm	4 bag	12.9kg

### Cautions

