

D22-360° LED Strip

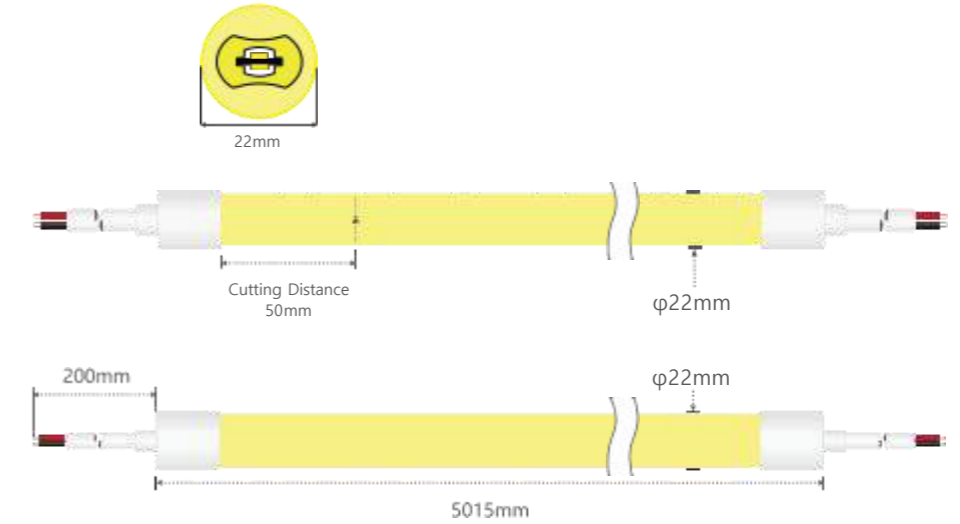


Example

Parameter Details

D22-360° LED Strip

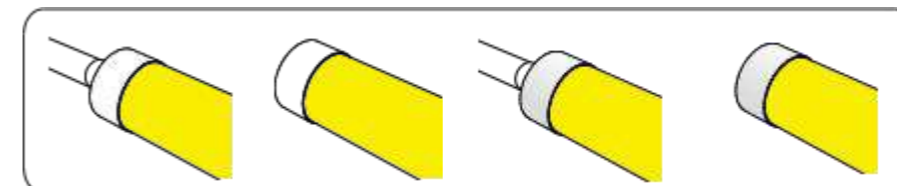
| | |
|-------------------------|--|
| PCB Width(mm) | 8 |
| LED Type | 2835 |
| LED strip Quantity(pcs) | 2 |
| LED Quantity(D/M) | 240 |
| Weight(g/m) | 423 |
| Rated Power(W/M) | 18.4 |
| Voltage (V) | DC24 |
| Luminous Flux(LM) | 1260~1370 |
| EFF (LM/W) | 62~68 |
| Render Index(RA) | ≥90 |
| Working Temperature | -20~50°C |
| CCT(K) | 2700K±100 3000K±150 4000K±200 6500K±300 |



Accessory Specifications

* Can freely mix and match

Wraparound style end cap



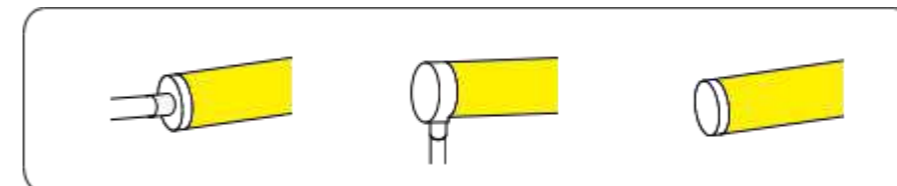
Straight Out (Silicone)

End Cap (Silicone)

Straight Out (Metal)

End Cap (Metal)

Edgeless end cap

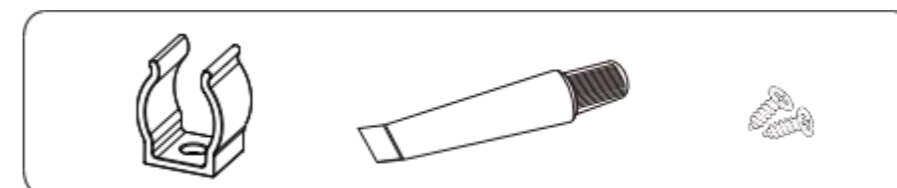


Straight Out

Bottom Out

End Cap

Accessory



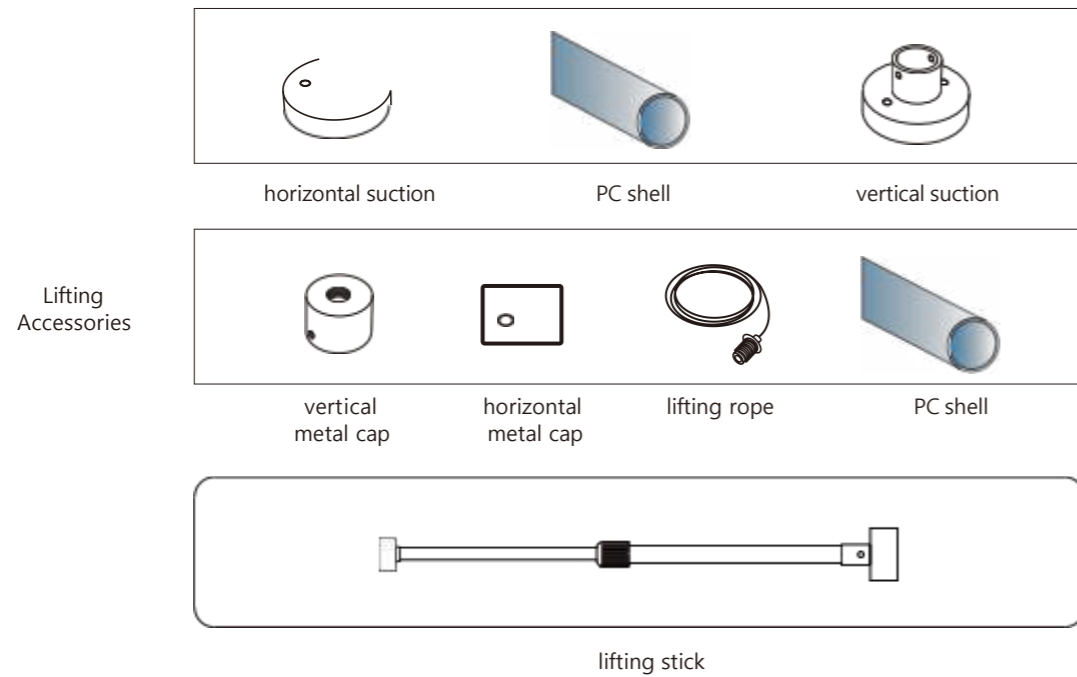
Clip

Glue

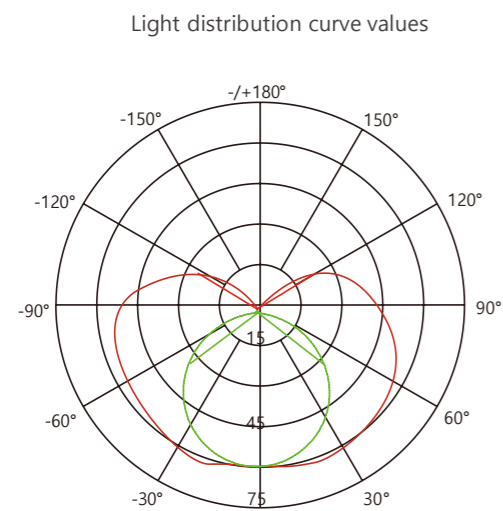
Screw

Accessory Specifications

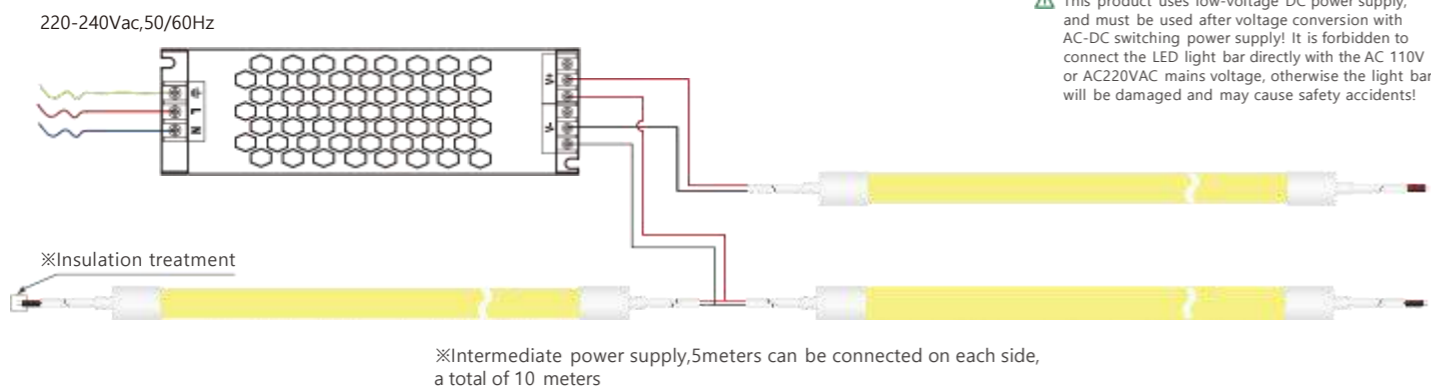
* Can freely mix and match



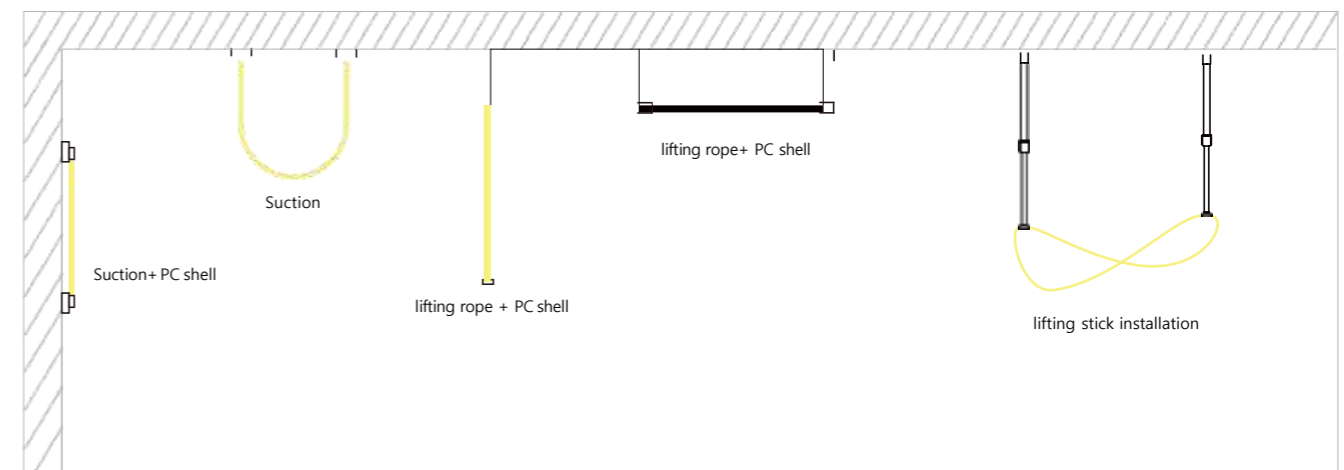
Light Distribution Curve Values



Connection Method

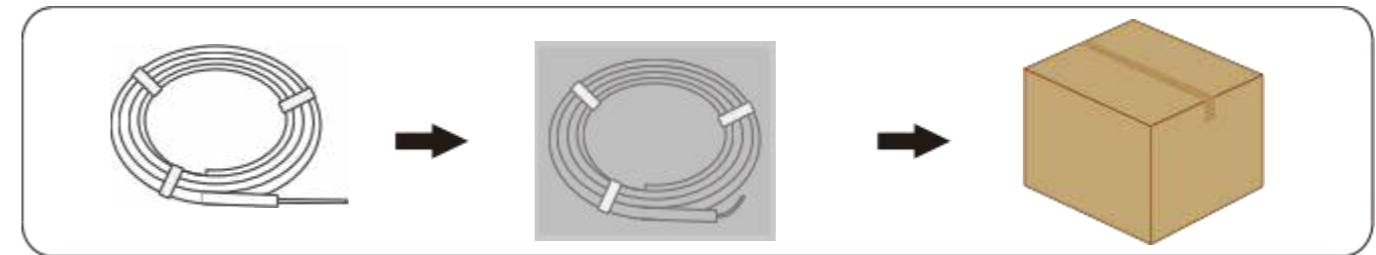


Installation Method



Packaging Method

* When there is a difference with the actual weight, the actual weight shall prevail



| Packaging Length | Weight of 1 bag | Carton Size | Packing Quantity | Total Weight |
|------------------|-----------------|----------------|------------------|--------------|
| 5 m/bag | 2215 g/bag | 600*600*250 mm | 5 bag | 13kg |

Cautions

